

LED Aufbauleuchte mit seitlicher Abdeckung aus Acryl
 Homogene Ausleuchtung durch dreiseitige Abstrahlung
 Trägerprofil und Enddeckel eloxiert
 Abdeckung mit Mikroprismenoptik oder Opaldiffusor

LED wall, ceiling luminaire with acrylic side diffusers
 Homogeneous lighting through 3 sides emission
 Profile base and end-pieces in anodised aluminium
 Opal or microprismatic diffuser

Plafone o da parete a LED con pareti laterali in acrilico
 Illuminazione omogenea grazie alla triemissione
 Profilo di supporto e tappi finali anodizzati
 Diffusore opale o microprismatico

Plafonnier ou de paroi à LED avec parois latérales en acrylique
 Très homogène illumination grâce à la triémission
 Profil de base et emboutes sont anodisés
 Diffuseur opal ou en microprisme

Dimmbare Versionen ab 20W
 Dimmable versions from 20W
 44-XXXXad = analog dimm. 1 - 10 V
 44-XXXXddd = DALI dimm.

W3 = LED 3000K
 W4 = LED 4000K



IP 20

MESSINA SD

220-240V AC/DC · CRI > 80 · Binning SDCM 3

SYS 8W

mp: 3000K = 850lm / 4000K = 900lm
 pm: 3000K = 840lm / 4000K = 880lm

44-10809.. L: 400mm
 44-10810.. L: 400mm

SYS 20W

mp: 3000K = 2570lm / 4000K = 2710lm
 pm: 3000K = 2520lm / 4000K = 2650lm

44-12009.. L: 890mm
 44-12010.. L: 890mm

SYS 33W

mp: 3000K = 4290lm / 4000K = 4510lm
 pm: 3000K = 4200lm / 4000K = 4420lm

44-13209.. L: 1491mm
 44-13210.. L: 1491mm

SYS 52W

mp: 3000K = 6870lm / 4000K = 7220lm
 pm: 3000K = 6730lm / 4000K = 7080lm

44-15209.. L: 2376mm
 44-15210.. L: 2376mm

SYS 13W

mp: 3000K = 1710lm / 4000K = 1800lm
 pm: 3000K = 1680lm / 4000K = 1770lm

44-11409.. L: 590mm
 44-11410.. L: 590mm

SYS 26W

mp: 3000K = 3430lm / 4000K = 3610lm
 pm: 3000K = 3360lm / 4000K = 3540lm

44-12609.. L: 1191mm
 44-12610.. L: 1191mm

SYS 39W

mp: 3000K = 5150lm / 4000K = 5420lm
 pm: 3000K = 5050lm / 4000K = 5310lm

44-14009.. L: 1774mm
 44-14010.. L: 1774mm

ARTIKELNUMMER ERGÄNZEN / COMPLETE CODE

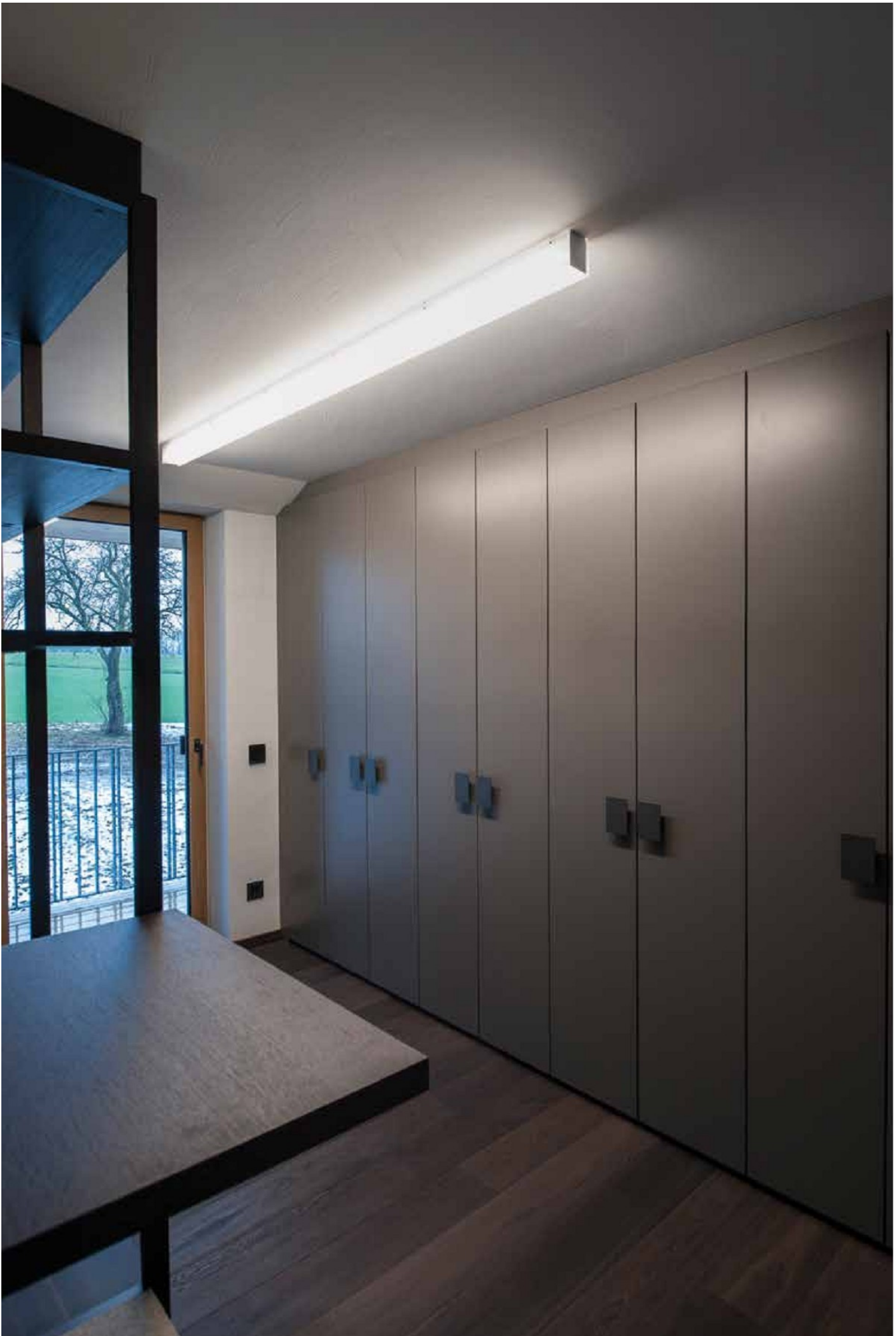
.. = ABDECKUNG/COVER

microprismatic = mp

PMMA opal = pm



Design: INHOUSE



ZURÜCK ZUR ÜBERSICHT / BACK TO OVERVIEW

Project: Private residence | Austria

401